



**ARCHITECT & INTERIOR
DESIGN SERVICES**

ANTHONY VAVAYIS & ASSOCIATES

24 LIME ST
KING STREET WHARF
SYDNEY 2000



At Anthony Vavayis and Associates we are committed to delivering to our clients a professional service that responds to their specific needs. We have a strong design philosophy centred around integrating a careful understanding of stakeholder visions with a contextual response. Our aim is to provide a creative design solution for each individual project, delivered on time and within the budget. While a Sydney based company we have completed projects in regional areas across, Queensland, NSW, South Australia, Victoria and Tasmania.

At AVA we offer our clients a full range of architectural and interior design services from the initial preparation of client brief, through to project completion. Throughout the process our services include; concept design, guidance through the approval process, design development documentation and construction certificate and assistance with the procurement methodology and construction process to satisfy client demand.

Our services are offered across all project types including:

- Healthcare
- Corporate Interiors
- Commercial Buildings
- Residential Accommodation
- Mixed Use Developments

AVA have a strong and established track record in medical project evidenced by our substantial history of completed works. Anthony Vavayis has a well regarded reputation with the private health sector and works closely with NSW Health to advance the necessary approvals. We offer advice on the most suitable procurement method for the client and the project type and provide ongoing advice and certification during the construction phase accordingly.

With many years of experience across all facets of architecture, interior design and construction, Anthony Vavayis & Associates offers a seamless blend of skills and systems resulting in projects with a high level of practical design and uncompromising quality.

COMPANY DETAILS

Company Name	Anthony Vavayis and Associates Pty Ltd
Discipline	Architects and Interior Designers
ABN	436 36 950 047
Registered Business Address	24 Lime Street, King Street Wharf, Sydney 2000
Postal Address	20/26A Lime Street, Sydney NSW 2000
Contact Name	Anthony Vavayis
Phone	(02) 92901810
Mobile	0418 118 098
Fax	(02) 9290 1860
Email	anthony@avaarchitects.com.au



HEALTHCARE

- 2018 IVF Australia Alexandria, Sydney – Day Surgery, \$6M
- 2018 Cosmos Clinic, Randwick – Day Surgery, \$1.5M
- 2018 Tas IVF Hobart - Day Surgery, \$4M
- 2017 Adelaide Day Surgery - Day Surgery, \$5M
- 2016 Norwest Clinic and Day Surgery, \$2M
- 2016 Double Bay Day Surgery - Day Surgery, \$1.5M
- 2016 Pennant Hills Day Surgery - Day Surgery, \$5.5M
- 2015 Chatswood Private Hospital – Private Hospital, \$8M
- 2015 Macquarie Street Sydney – Day Surgery, \$2M
- 2015 L7 Macquarie Street – Day Surgery, \$5M
- 2015 Bondi Junction Radiology - Operating Theatre \$1M
- 2015 Bondi Medical Center, \$3.5M
- 2014 East Sydney Private Hospital, Private Hospital, \$7M
- 2014 Hospital for Specialist Surgery, interior design – Private Hospital, \$40M
- 2014 Forbes Street Day Surgery – Day Surgery, \$1M
- 2013 Norwest Ophthalmic Day Surgery – Norwest, \$800K
- 2012 Canberra Microsurgery, Ophthalmic, \$5M
- 2012 Bathurst Private Hospital Refurnishment, Bathurst, \$3M
- 2012 L8 Macquarie Street, Consulting rooms, \$300K
- 2012 City West Day Surgery – Day Surgery, \$2M
- 2012 ACT Endoscopy – Procedure and consulting rooms, \$1.2M
- 2010 Bondi Junction Private Hospital – Day Surgery, \$3M
- 2010 Concord Private Hospital – Canada Bay, \$3.5M
- 2010 Lindfield Ophthalmic – Consulting Rooms, \$300K
- 2011 Personal Eyes York Street – Ophthalmic Day Surgery, \$1M
- 2011 Miranda Ocular Plastics – Day Surgery, \$600K.
- 2011 Liverpool Eye Surgery – Day Surgery Centre, \$1.4M.
- 2010 Macquarie Street Day Surgery – Macquarie Sydney.
- 2010 Norwest Eye Clinic – Norwest, \$1M
- 2009 Commercial Office Building, Loftus St, Wollongong – 8 Storey medical consult suites and day surgery, \$16M.
- 2008 Hyperbaric Health – New chambers & surgical facility, Mascot
- 2005 Specialist Eye Clinic – Kingsford.
- 2005 The Shire Heart Hospital – Cardiac facility, Sutherland Hospital.
- 2004 Liverpool Dental Clinic – Six surgery clinic.
- 2004 Ophthalmic, Ocular Plastics Day Surgery & Specialist Consulting Rooms – Macquarie St Sydney.
- 2002 Ophthalmic Day Surgery & Laser Eye Clinic - Hornsby
- 2001 Burwood Day Surgery Centre - Specialist consulting rooms



COMMERCIAL AND MULTI-UNIT BUILDINGS

- 2017 Urbanest Student Accommodation - North Terrace Adelaide, \$55M.
- 2016 Pennant Hills Day Surgery - Purpose built day surgery, \$5.5M
- 2015 West Ryde Town Centre – Retail and 229 residential unit development, \$90M.
- 2015 Four Seasons - Hotel Upgrade, 300K
- 2013 Crown Street Mixed Used Development, \$22M
- 2011 West Ryde Community Centre – Local Community Centre, \$12M.
- 2009 The Dalgety Townsville – 110 Residential apartments over 20 levels, \$55M.
- 2009 149 Castlereagh Street Sydney – Extensions and refurbishment, \$55M.
- 2008 Elizabeth Bay Apartments – 10 Luxury apartments, \$6M.
- 2007 Palmer Street Townsville – Mixed use commercial & 66 residential apartments, \$25M.
- 2006 William Street Apartments, Port Macquarie – 80 Apartments, resort style development, \$35M.
- 2005 Seaforth Apartments – 16 Luxury apartments, \$9M.
- 2005 201 Castlereagh Street Sydney – Additions & refurbishment of existing building, \$7M.
- 2005 Commercial Office Building Kent Rd, Mascot – 4 Level refurbishment and extension, \$8M.
- 2004 Wyong Tennis Club & Apartments – 2,000m2 Club, 56 apartments, \$15M.
- 2004 The Entrance – 35 Apartments, \$12M.
- 2004 Mixed Use development, Shell Harbour – Commercial and residential development \$6M
- 2002 Princess Highway Kogarah - 35 Residential apartments, \$8M.
- 2001 Cross Street Hurstville – 7 Levels, 30 units, \$6.5M.
- 2001 Bellevue Hill – 4 Luxury units, \$1.45M.
- 2000 465 Kent Street – 16 Storey commercial & residential tower.
- 2000 9 Help Street Chatswood – Continual office refurbishment and upgrading for CSR.
- 1999 199 Oxford Street Darlinghurst –500m2 commercial building with façade retention, \$1.4M.
- 1999 Beaumont Ave Maroubra – 4 Levels, 10 units, \$1.8M.
- 1999 Surry Hills “Icon” apartments – 8 Levels, 56 units, \$14M.
- 1998 1 Railway Parade Burwood –Three towers, Part 15 & 16-storey building with basement carparking. 240 residential units, 2,500m2 commercial space, \$60M.



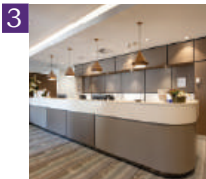
OUR PROJECTS IN DETAIL



1 IVF AUSTRALIA, SYDNEY



2 ADELAIDE DAY SURGERY, ADELAIDE



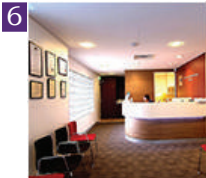
3 CHATSWOOD PRIVATE HOSPITAL, SYDNEY



4 NORWEST EYE CLINIC, SYDNEY



5 PENNANT HILLS DAY SURGERY, SYDNEY



6 MIRANDA OCULAR PLASTICS DAY SURGERY, SYDNEY



7 BONDI JUNCTION PRIVATE HOSPITAL, SYDNEY



8 SUTHERLAND HEART CLINIC, SYDNEY



9 EAST SYDNEY PRIVATE, SYDNEY



10 LIVERPOOL DAY SURGERY, SYDNEY



IVF AUSTRALIA, SYDNEY

- 01 Level 3 Reception
- 02 Level 3 Waiting Area
- 03 Level 3 Consult Room
- 04 Level 1 Operating Theatre
- 05 Level 1 Recovery Area

Client: IVF Australia
Builder: GMP Constructions
Project Cost: \$6 million
Stage: Completed 2018

AVA Project Team:
Anthony Vavayis, Catherine Florio

Project Description:
IVF Australia in Alexandria occupies a recently completed building with an external mesh façade that filters natural daylight into the building throughout the day. The new IVF facility spans over four levels. The street entry leads through a café to the lift lobby directing clients to the spacious double height reception and waiting area at level 3. The interior design aims to relax clients with a modern, light and fresh feel. At Level 3 are a range of consultant and ultra sound rooms, embryo transfer rooms and a state of the art lab. Level 1 provides 4 operating theatres, 9 stage 1 recover beds, 12 stage 2 recovery chairs with staff areas accommodated at Level 2.



ADELAIDE DAY SURGERY, ADELAIDE

- 01 Ground Floor Reception
- 02 CSSD Clean Room
- 03 Recovery 1
- 04 Recovery 2
- 05 Operating Theatre

Client: Adelaide Day Surgery
Builder: SHAPE Australia SA
Project Cost: \$5 million
Stage: Completed 2017

AVA Project Team:
Anthony Vavayis, Rachael Parting

Project Description:
Adelaide Day Surgery is located on Adelaide's prestigious North Terrace. The brief was to create a warm and pleasant atmosphere for patients and staff alike. Abundant natural light gives the space a light and fresh appearance. The refurbishment was staged and the facility remained in operation throughout the works. The completed day surgery offers 3 operating theatres, 5 pre-op beds, 5 stage 1 recovery beds, 8 stage 2 recovery chairs and a stage 2 paediatric recovery chairs.



1



2



3

PENNANT HILLS DAY SURGERY, PENNANT HILLS

- 01 External View
- 02 Reception
- 03 Recovery

Client: John Napali
Builder: Greencore Pty Ltd
Project Cost: \$6M
Stage: Completed 2016

AVA Project Team:
Anthony Vavayis, Kathy Davies, Rachael Parting

Project Description:
Pennant Hills Day Surgery is located on the busy, 6 lane arterial, Pennant Hills Road. The overriding client brief objective was to achieve a relaxing and calm experience for patients as they underwent the journey of a procedure. To create a serene and peaceful atmosphere that filtered the noise and the traffic the design features a layered external screen. The visual severity of the 6 lane road is effectively disguised and the band of green tree canopy that typifies the north west is invited in. The feature screen of the building is legible from the key interior spaces that patients are experiencing, connecting them to the elements of the external environment.



NORWEST CLINIC + DAY SURGERY, SYDNEY

- 01 Clinic ReceptionView
- 02 Day Surgery Recovery 1
- 03 Day Surgery Recovery 2

Client: Dr Chang
Builder: Elite Project Services Pty Ltd
Project Cost: \$2 million
Stage: Completed 2016

AVA Project Team:
Anthony Vavayis, Rachael Parting

Project Description:

The refurbished Norwest Eye Clinic provides 1 procedure room, 4 consulting rooms and ophthalmological rooms offering advanced testing equipment. A new reception desk gives a fresh contemporary feel.

The new co-located Norwest Day Surgery provides 2 operating theatres, 2 pre-op beds, 3 stage 1 recover beds, 6 stage 2 recovery chairs and a discharge room with a further 6 chairs. The day surgery offers a fresh and welcoming environment.



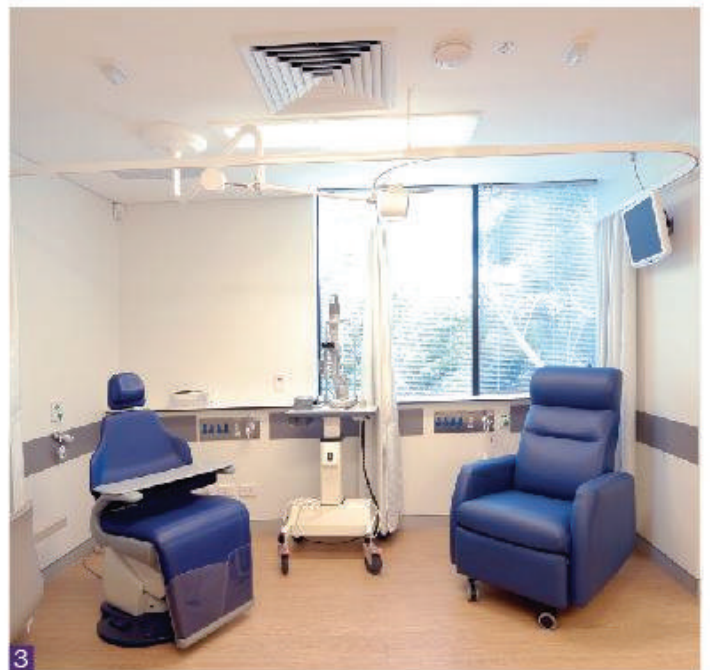
CHATSWOOD PRIVATE HOSPITAL, CHATSWOOD

- 01 Reception
- 02 Recovery
- 03 Operating Theatre

Client: Presemed Pty Ltd
Builder: Elite Project Services
Project Cost: \$6M
Stage: Completed 2016

AVA Project Team:
Anthony Vavayis

Project Description:
Chatswood Ophthalmic Hospital with 6 specialised ophthalmic theatres is the largest facility of its type in the southern hemisphere. Located in the heart of Chatswood the dedicated ophthalmic facility has installed state of the art technology with the image guided femtosecond laser for cataract procedures. The hospital has 6 theatres with 6 pre-op beds, 10 recovery beds and 4 overnight rooms with the additional capacity to cater for paediatric patients.



MIRANDA OCULAR PLASTICS, SYDNEY

- 01 Reception
- 02 Medical Consulting Room
- 03 Operating Theatre

Client: Miranda Ocular Plastics
Builder: Elite Project Services Pty Ltd
Project Cost: \$1.3 million
Stage: Completed 2013

AVA Project Team:
Anthony Vavayis

Project Description:

Miranda Day Surgery is a highly specialised Ocular Plastics Day Surgery and Consulting Facility. Department of Health licensed, this facility offers one operating theatre and associated recovery areas. This very compact day surgery utilises glass framed sliding walls to create multiple use spaces that optimise the limited area that was available. The colour scheme is bright and fresh giving a sense of openness to the small spaces.



BONDI JUNCTION PRIVATE HOSPITAL, SYDNEY

01 Reception Counter 02 Theatre
03 Private Room 04 Back of House

Client: Bondi Junction Private Hospital

Project Cost: \$2 Million

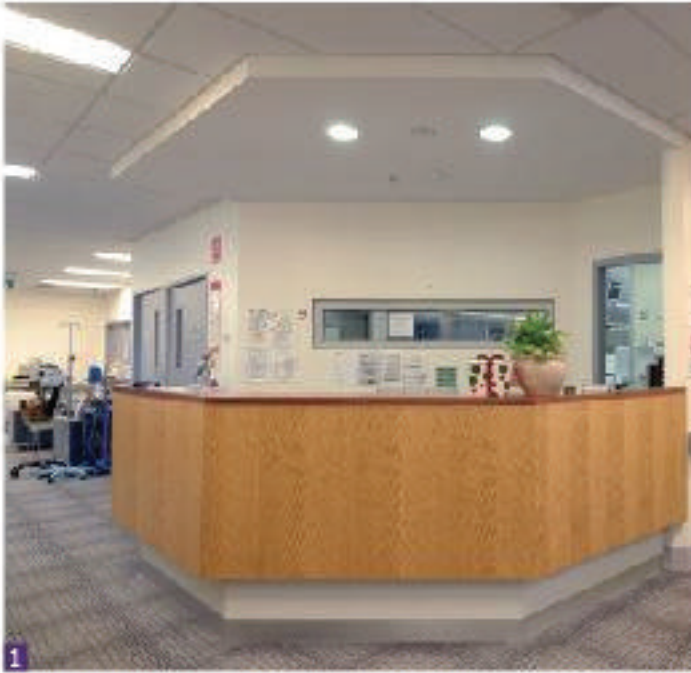
Stage: Completed 2012

AVA Project Team:

Anthony Vavayis

Project Description:

Bondi Junction Private Hospital is a cosmetic surgery facility with two operating theatres and 7 deluxe overnight bedrooms each with ensuite. The complex L-shaped design maximises the use of the 580m² floor area and the crescent shaped 4 bed recovery takes full advantage of the natural lighting. The facility was a new fit out with within the existing lower commercial podium of a multi storey residential building. The interior palette is warm and inviting with a modern yet homely feel. The design process integrated the views of a number of stakeholders ultimately resulting in an intricate and well planned facility.



SUTHERLAND HEART CLINIC, SYDNEY

01 Nurse Desk 02 Stage 1 Reception
03 Operating Theatre

AVA Project Team:
Anthony Vavayis

Client: Anthony Shubitz
Builder: ADCO
Project Cost: Est. \$3 Million
Stage: Completed 2005

Project Description:

Sutherland Heart Clinic is a state of the art cardiac catheter facility for South Western Sydney, on the campus of Sutherland Hospital. Operating theatres cater to a leading group of health professionals who diagnose and treat patients with heart disease as well as patients with blockages in the circulatory system. The Clinic has two catheter laboratories & specialized operating theatres, equipped with the latest technology. There is a spacious 10 bed recovery ward with a recovery lounge set aside for the comfort of family and patients.